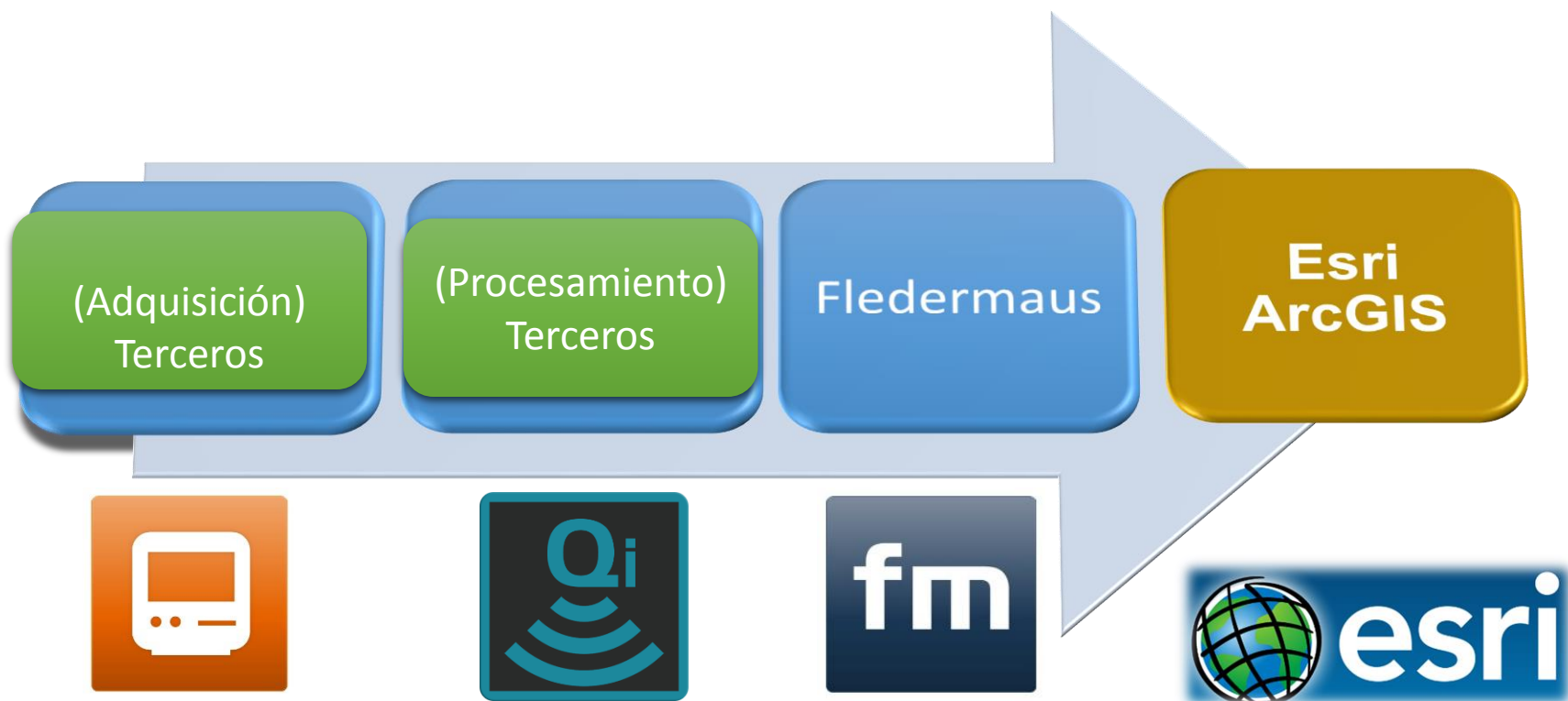


Modelos de Elevación: Capacidad Simultanea

Deborah Febres Urdaneta – Abril, 2016

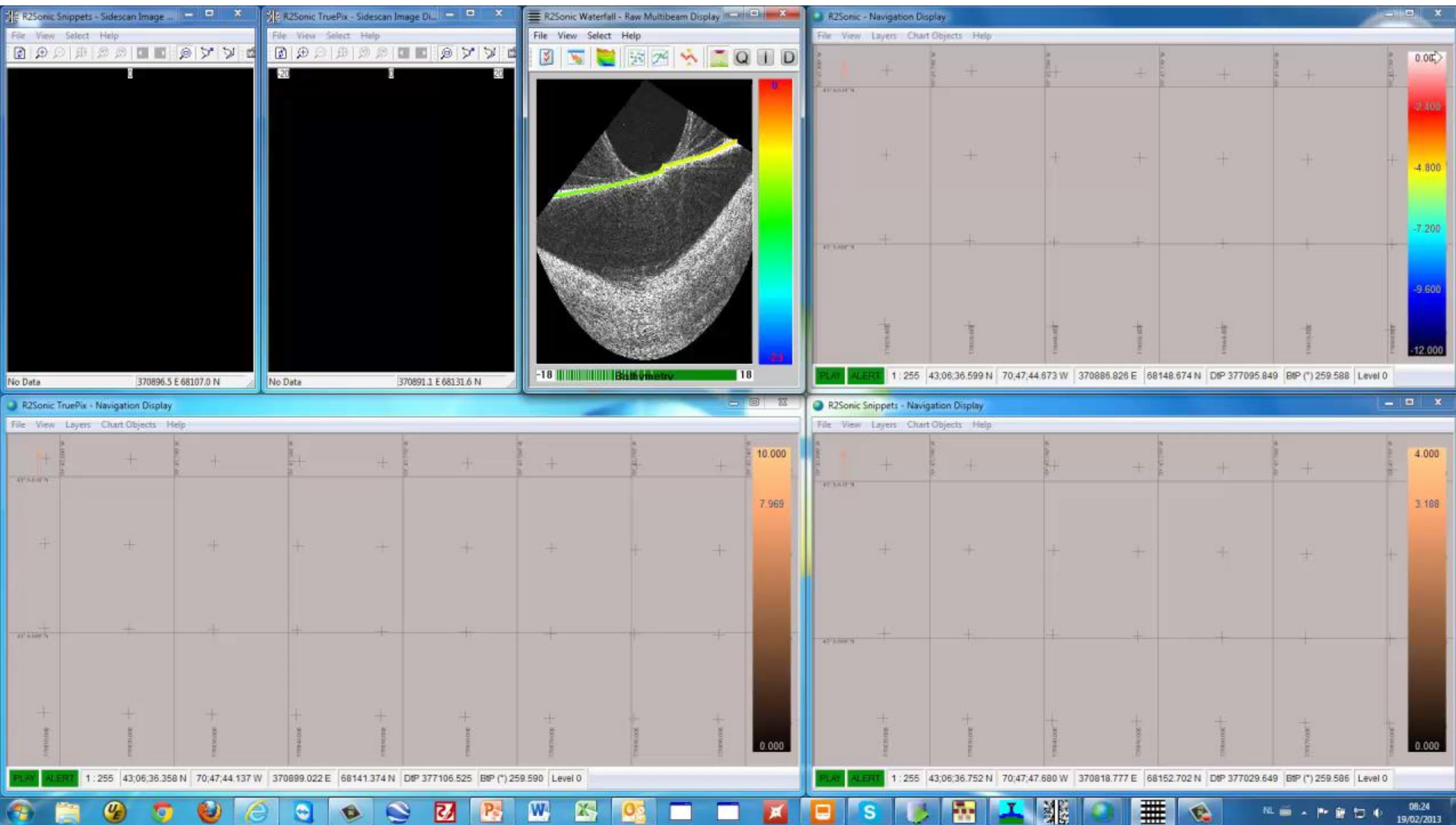


QPS: Flujo de trabajo completo

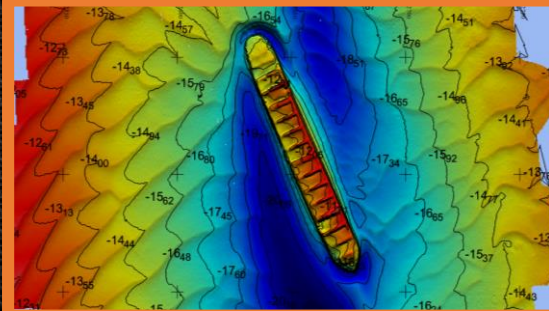
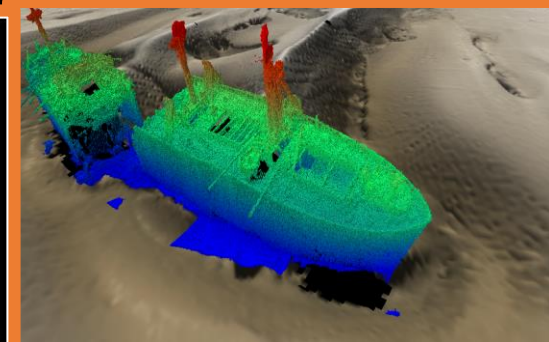
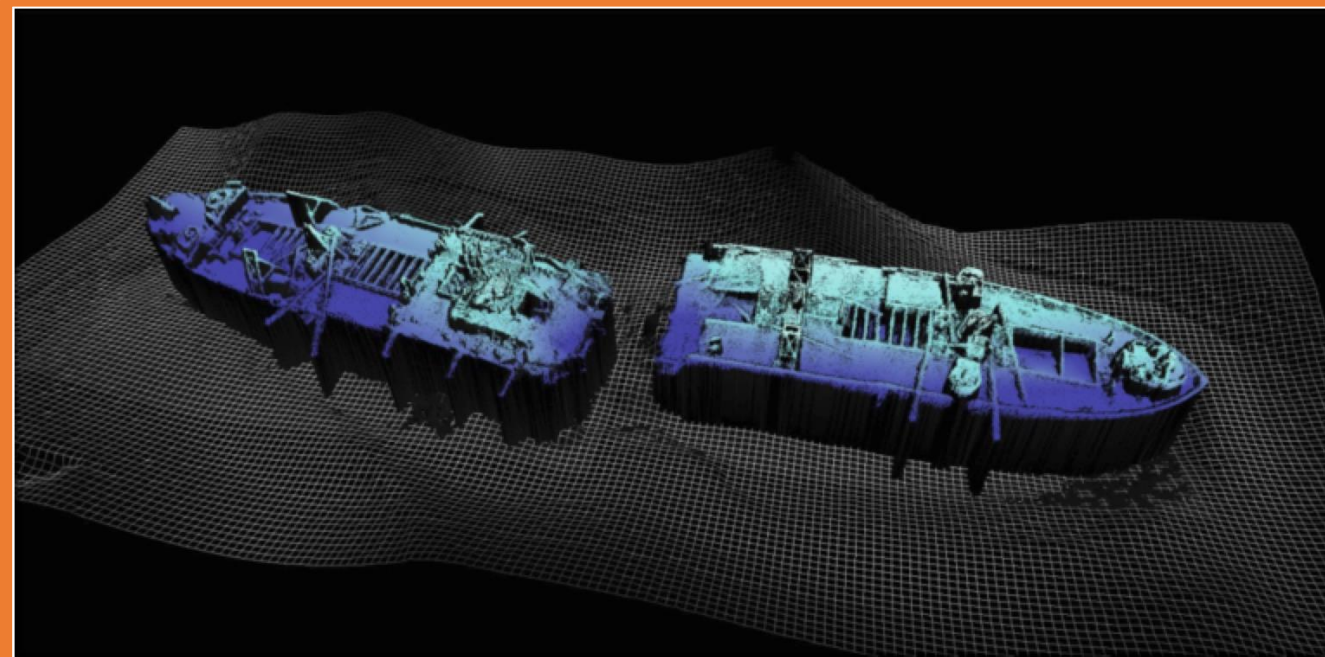
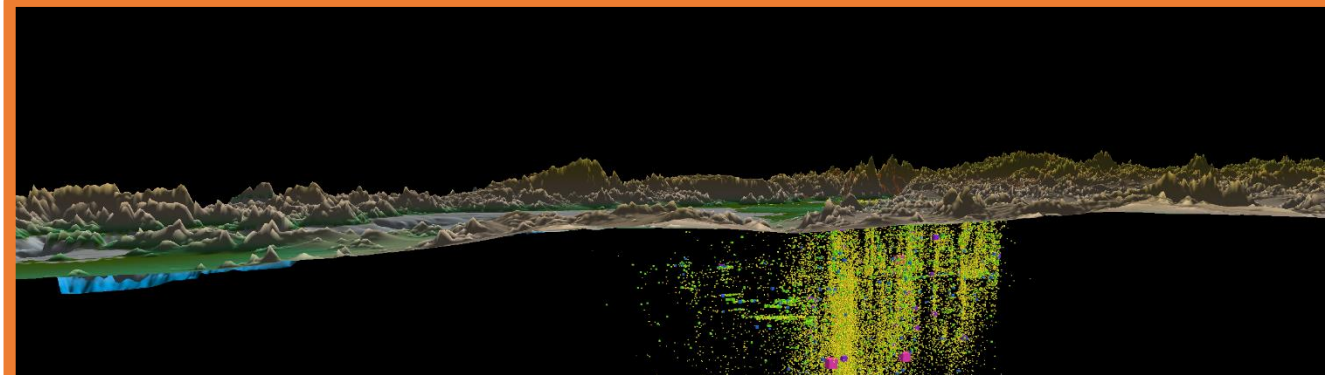




QINSy: Calidad en el levantamiento



Puntos

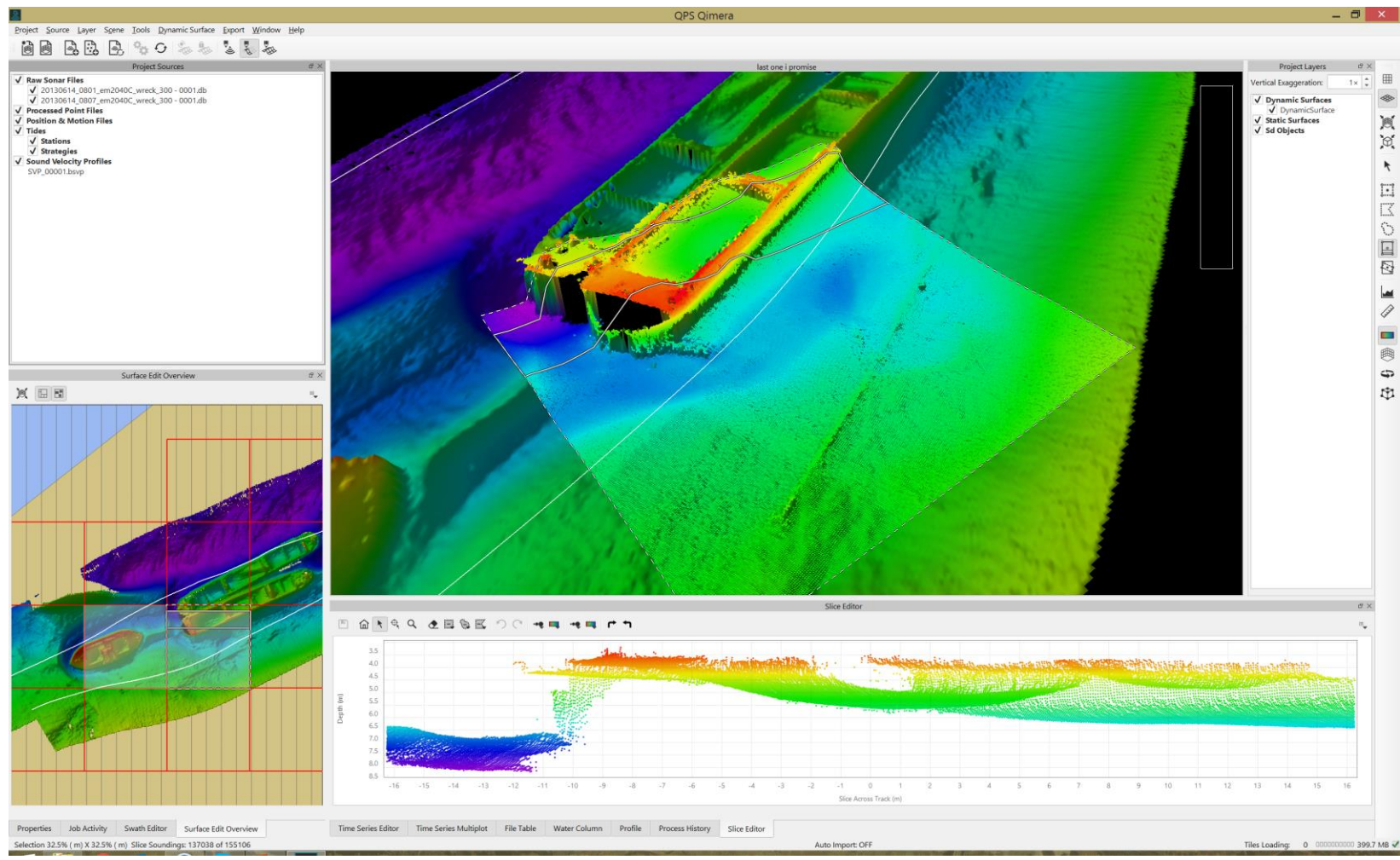




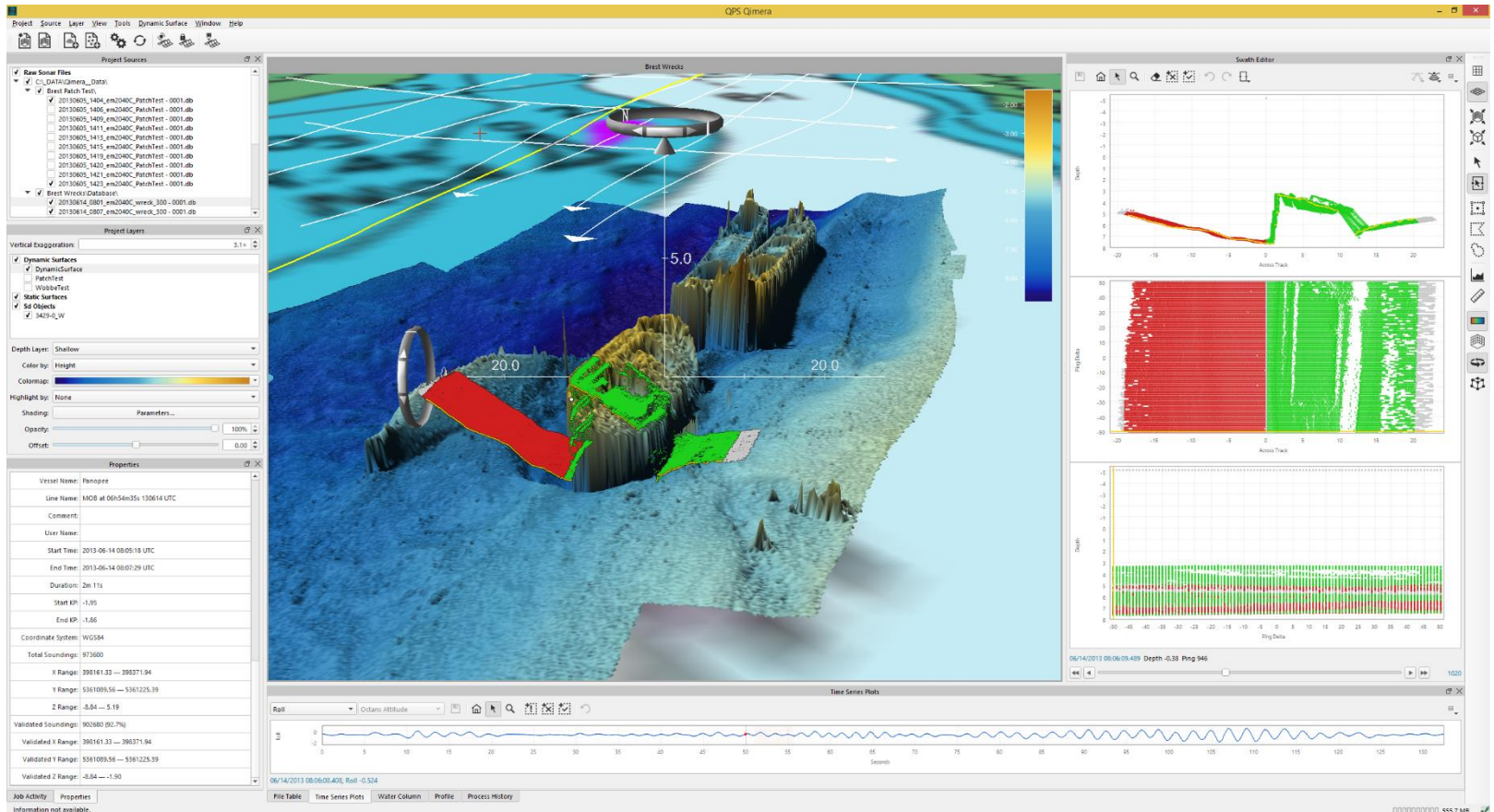
Superficie Dinámica Edición geo-espacial

The screenshot displays the QPS Qimera software interface. The main window shows a dynamic surface map titled "Carmen Area3" with a color scale ranging from -6.00 to -20.00. The map features contour lines and two circular markers. A "Time Series Editor" window is open at the bottom, showing a plot of "Roll (°)" versus "Series Time (s)". The plot shows a fluctuating signal over a 50-second period, with a red dot marking a specific data point at approximately 34 seconds. The interface includes a menu bar (Project, Source, Layer, Scene, Tools, Dynamic Surface, Export, Window, Help), a toolbar, and several panels: "Project Sources" (listing various data files), "Project Layers", "Surface Edit Overview", and "Properties". The status bar at the bottom indicates "Auto Import: OFF" and "Tiles Loading: 0 / 1.0 GB".

Depurar los datos: Edición en cortes



Depurar datos: Edición de andana



The screenshot displays the QPS Chimera software interface, used for processing and editing bathymetric data. The main window shows a 3D visualization of a seabed profile with a red swath track and a green swath track. The vertical exaggeration is set to 3.1x. The depth scale ranges from -2.00 to 10.00 meters.

The **Swath Editor** panel on the right contains three plots:

- Top Plot:** A line graph showing Depth (m) vs. Across Track (m). The depth values range from approximately -5 to 8 meters, and the across track values range from -20 to 20 meters.
- Middle Plot:** A grid plot showing Depth (m) vs. Across Track (m). The depth values range from -5 to 8 meters, and the across track values range from -20 to 20 meters. The plot shows a red area on the left and a green area on the right, representing different swath tracks.
- Bottom Plot:** A grid plot showing Depth (m) vs. Ping Delta (m). The depth values range from -5 to 8 meters, and the ping delta values range from -80 to 80 meters.

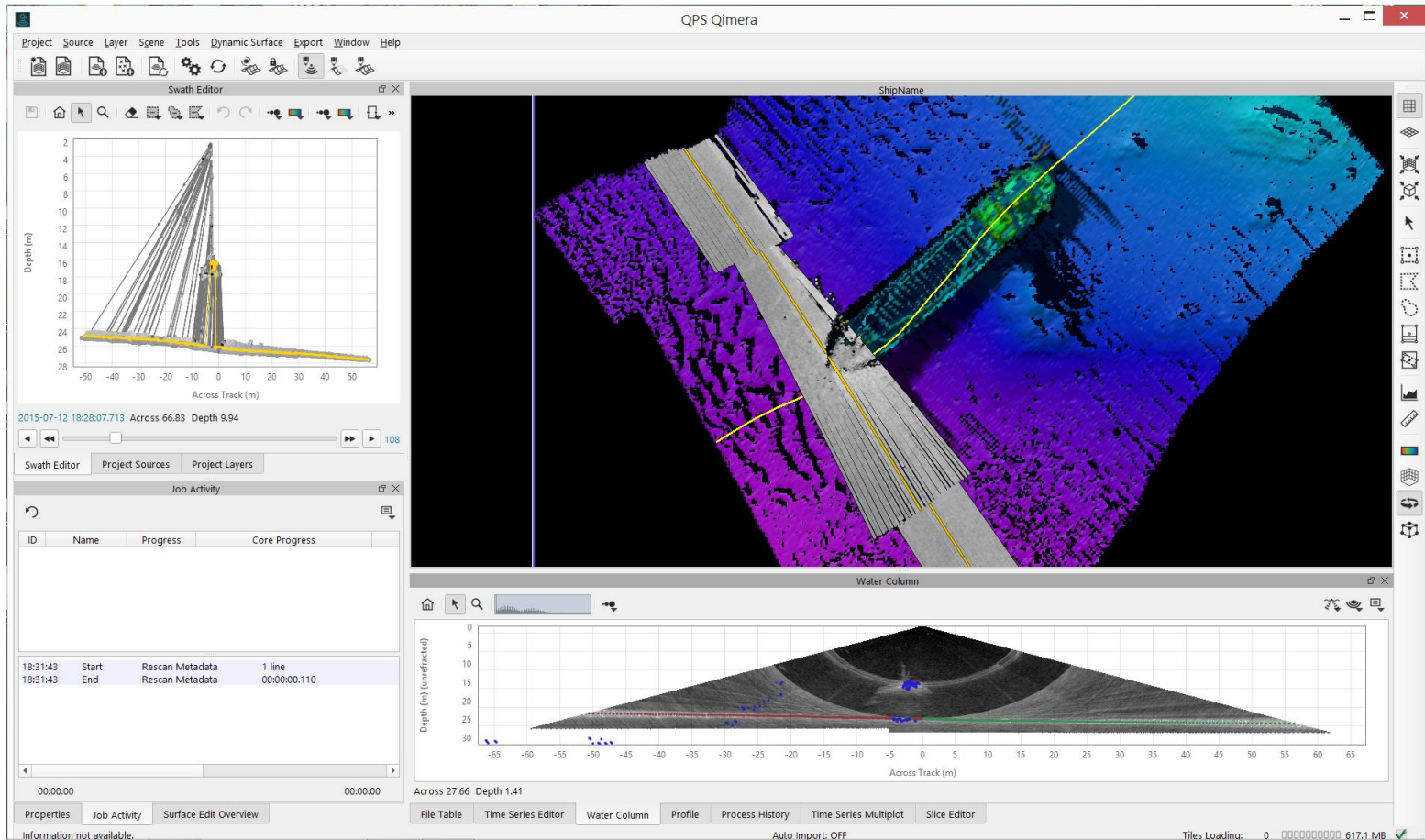
The **Time Series Plots** panel at the bottom shows a plot of Roll (degrees) vs. Seconds. The roll values range from approximately -1 to 1 degree, and the time range is from 0 to 130 seconds.

The **Project Sources** panel on the left lists the raw sonar files used in the project, including files like `20130605_1406_enh2040C_PatchTest - 0001.db` and `Brest Wrecks DATA0101`.

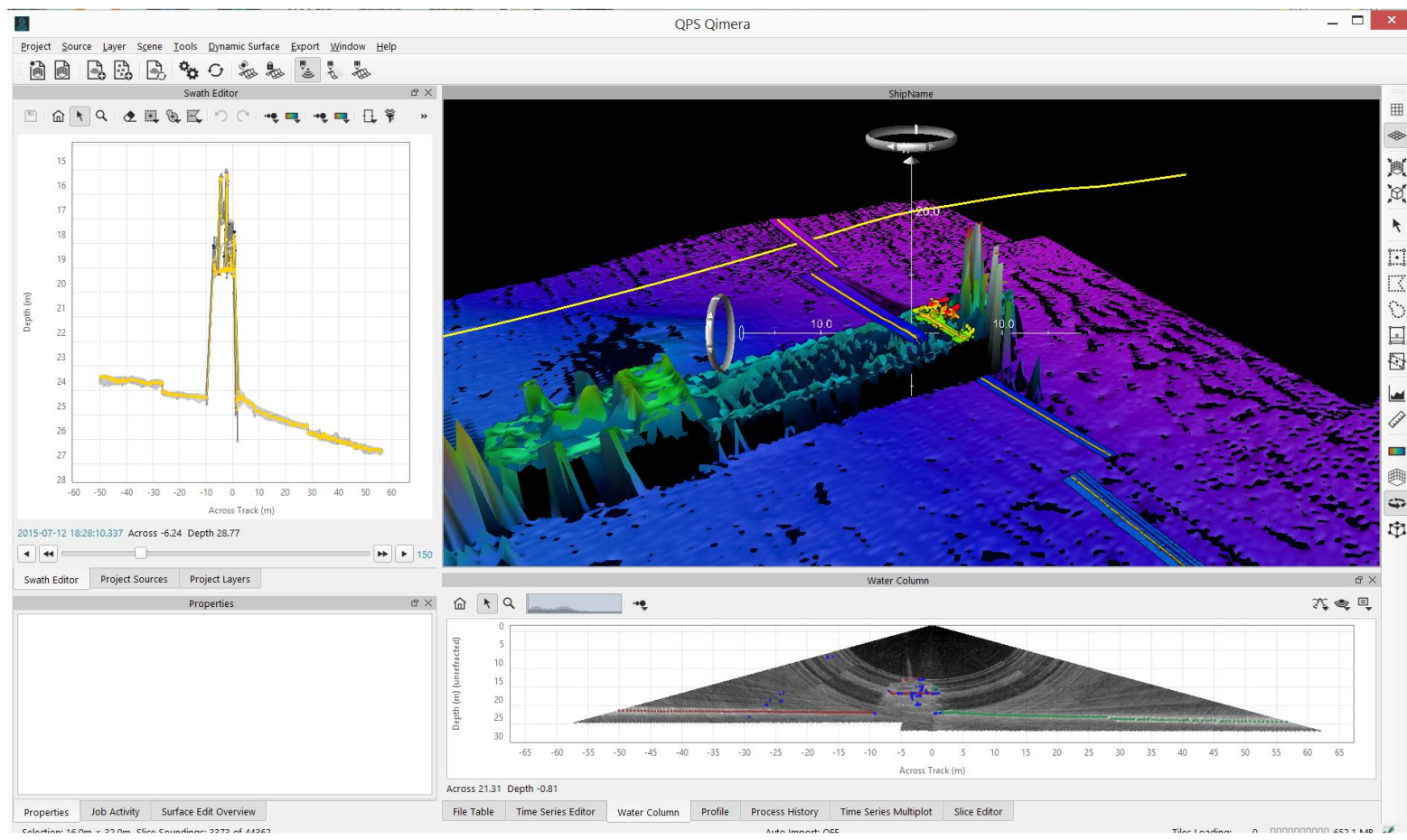
The **Properties** panel on the left provides details about the vessel and survey parameters:

- Vessel Name: Panopce
- Line Name: MOB at 06154m35s 130614 UTC
- User Name: [blank]
- Start Time: 2013-06-14 08:05:16 UTC
- End Time: 2013-06-14 08:07:29 UTC
- Duration: 2m 11s
- Start KP: -1.95
- End KP: -1.86
- Coordinate System: WGS84
- Total Soundings: 973600
- X Range: 398161.33 — 398371.94
- Y Range: 5361089.56 — 5361225.39
- Z Range: -5.84 — 5.19
- Validated Soundings: 902800 (92.7%)
- Validated X Range: 398161.33 — 398371.94
- Validated Y Range: 5361089.56 — 5361225.39
- Validated Z Range: -5.84 — -1.90

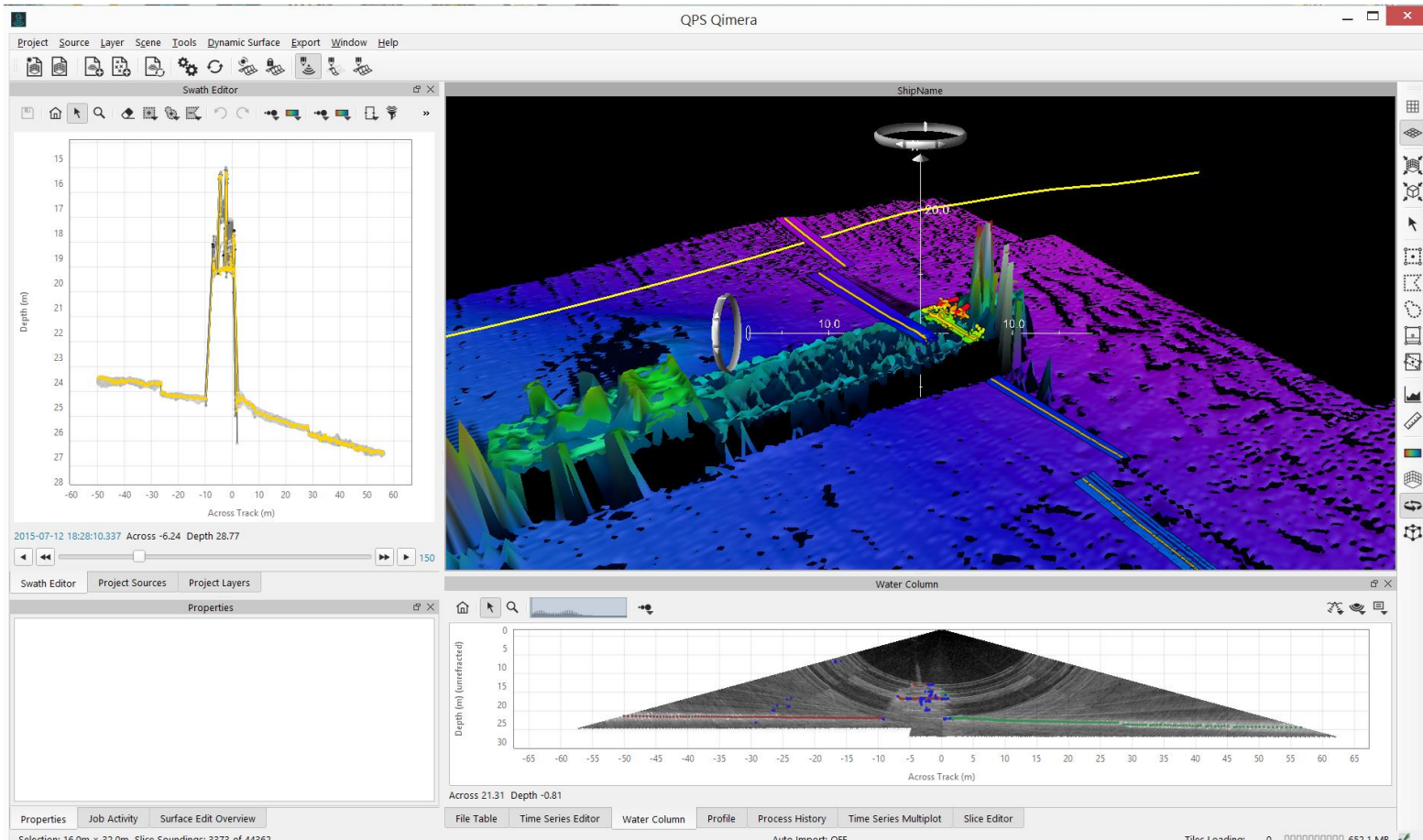
Intensidad y Columna de agua



Detecciones adicionales

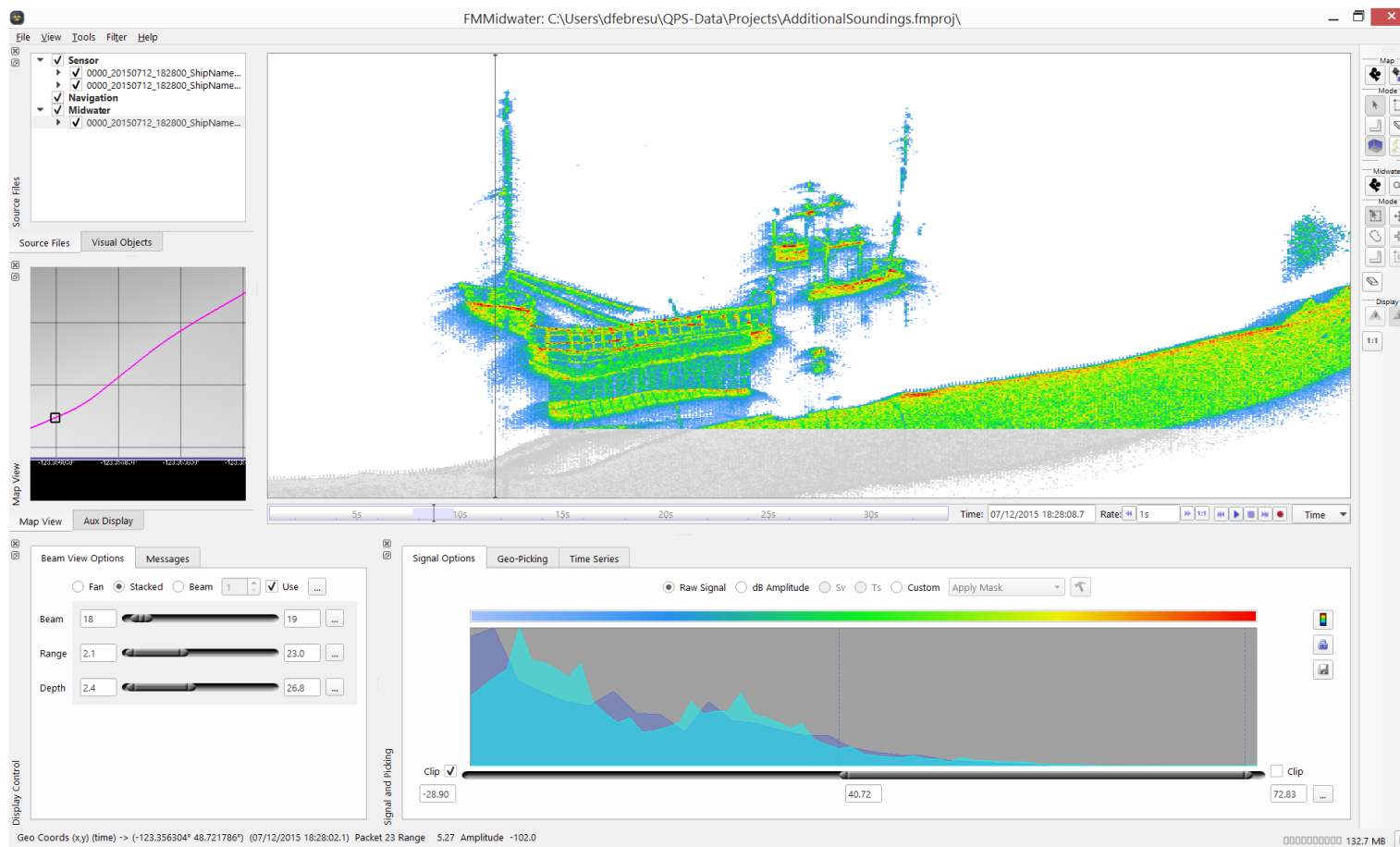


Demo #1. Detecciones adicionales

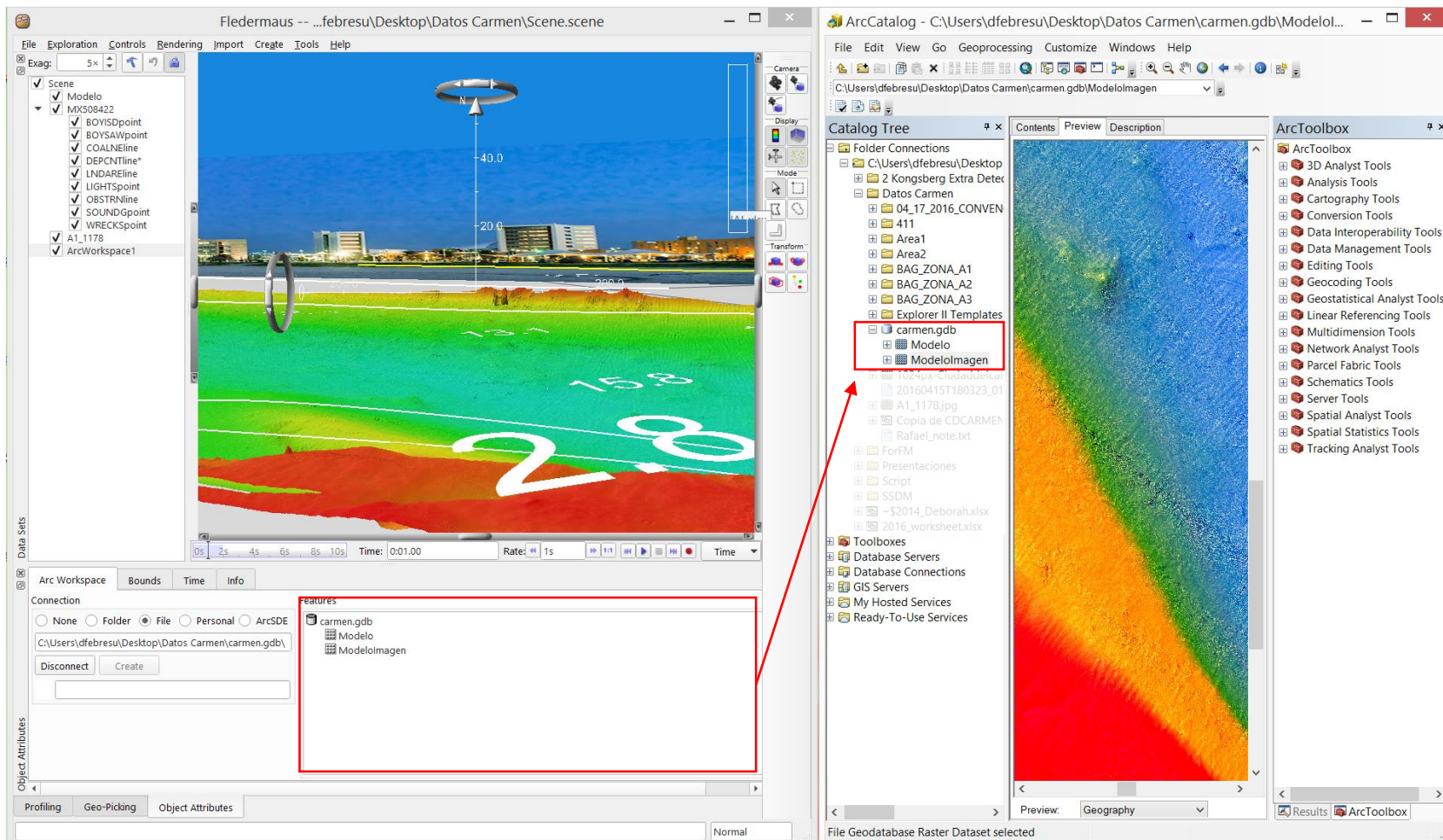




FMMidwater

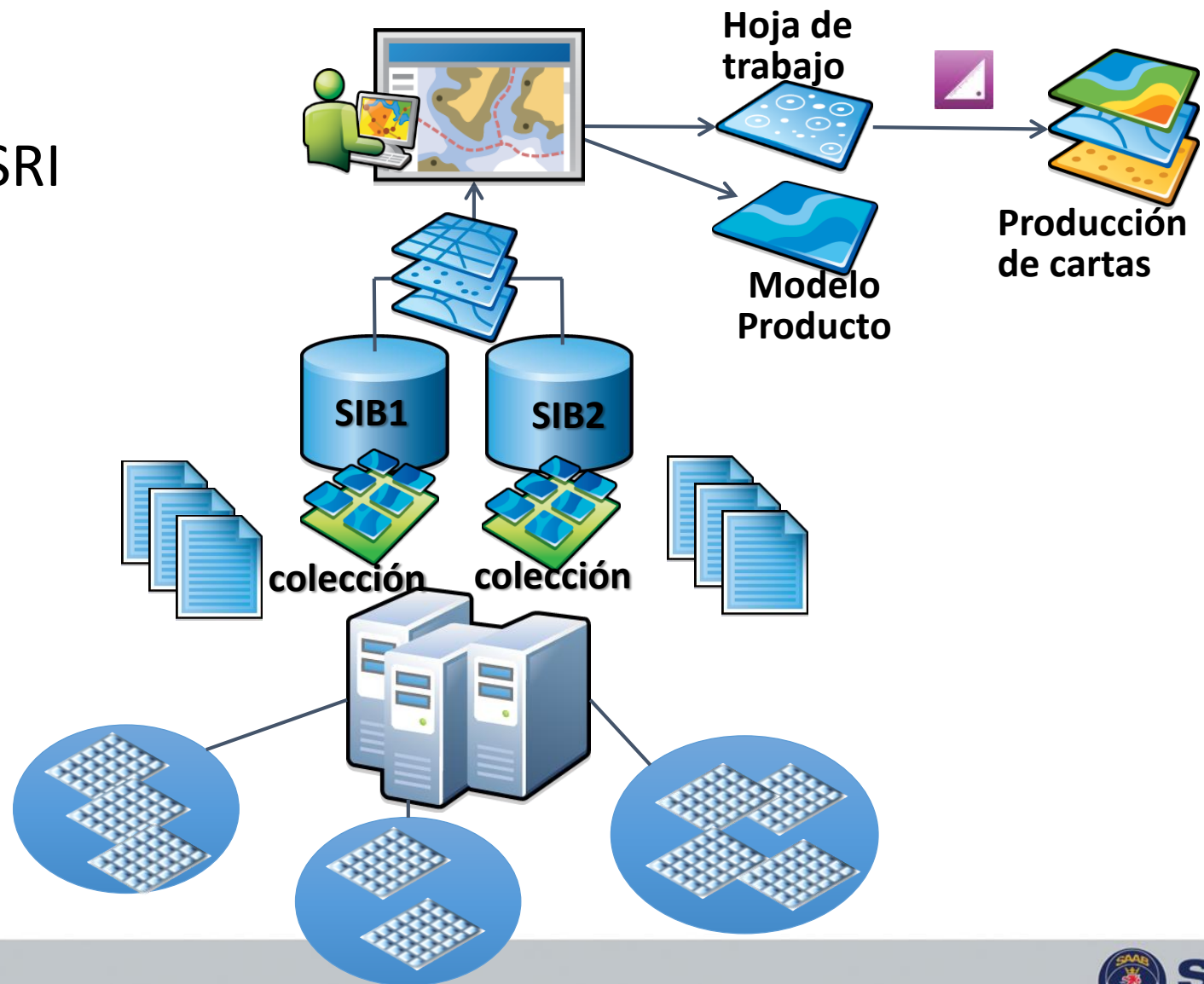


Fledermaus



Diseminación y uso

QPS-ESRI



Aplicaciones, soluciones y servicios para la comunidad de la industria marítima



QINSy

Levantamientos hidrográficos y sistemas de posicionamiento



Fledermaus

Visualización y análisis



Qimera

Procesamiento de datos hidrográficos



Qarto

Producción específica de CNE



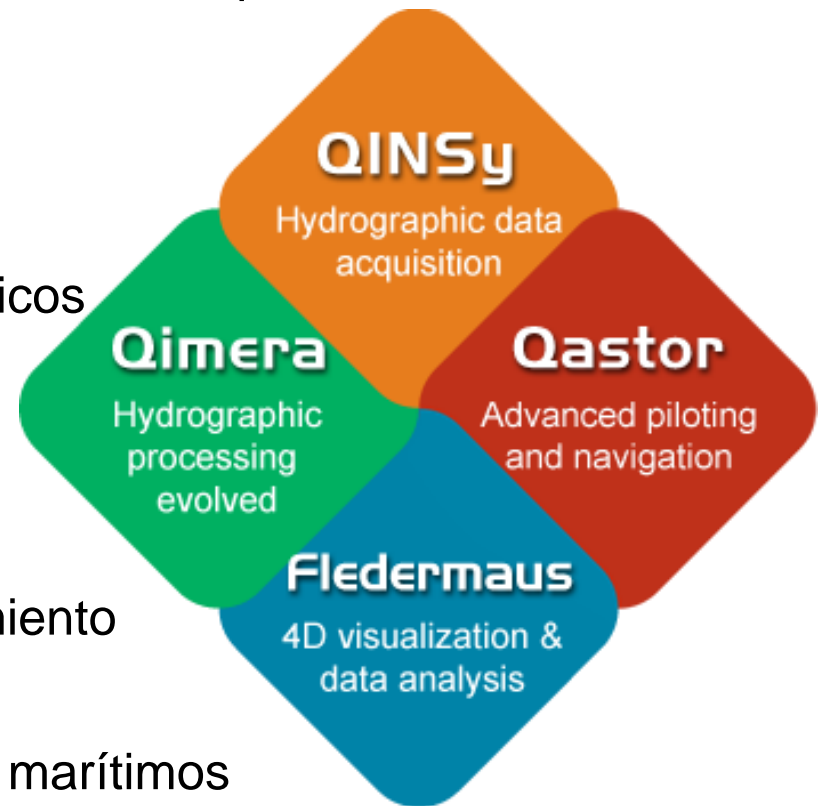
Qastor

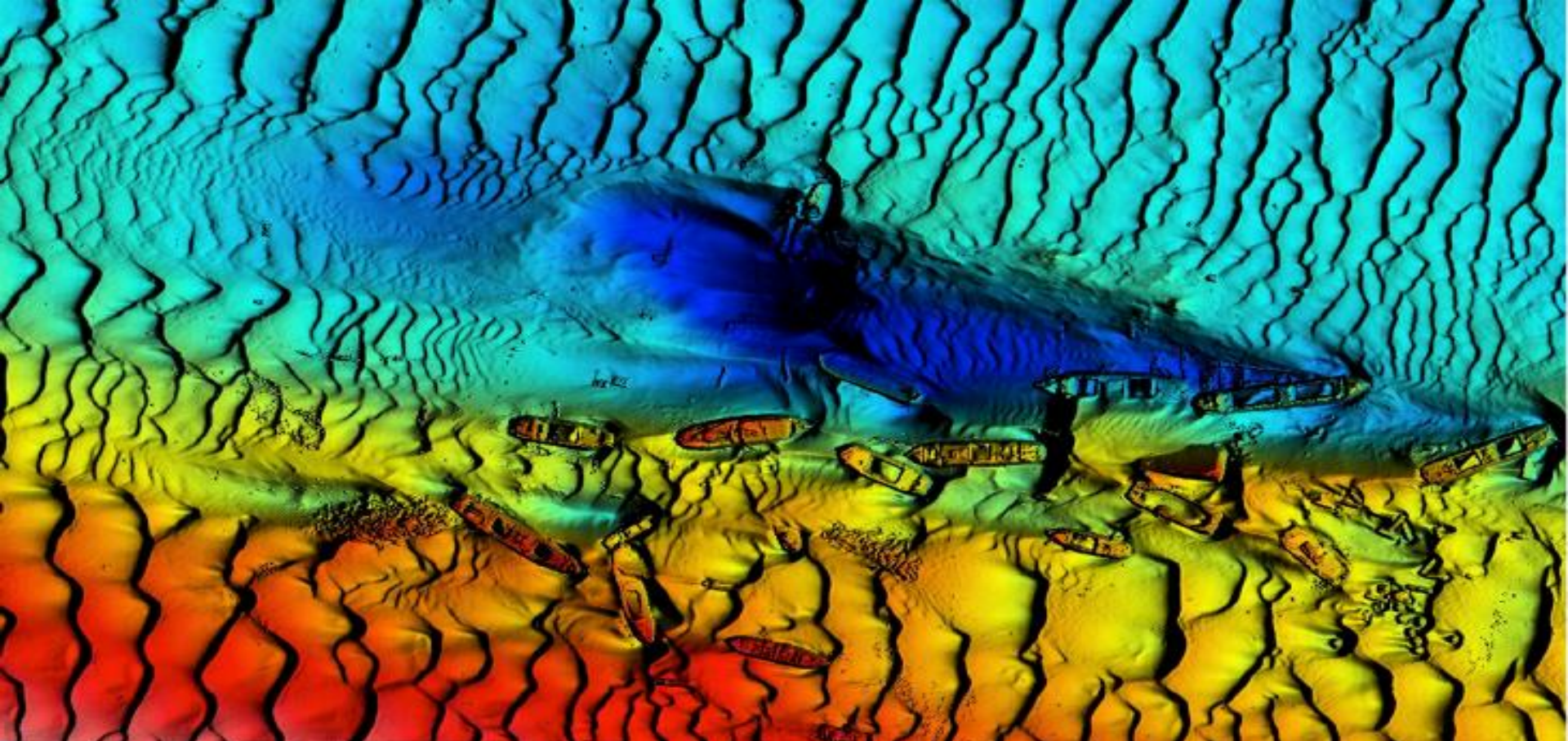
Navegación y sistema de acoplamiento



Connect

Sistemas de distribución de datos marítimos





Gracias



SAAB

SAABGROUP.COM